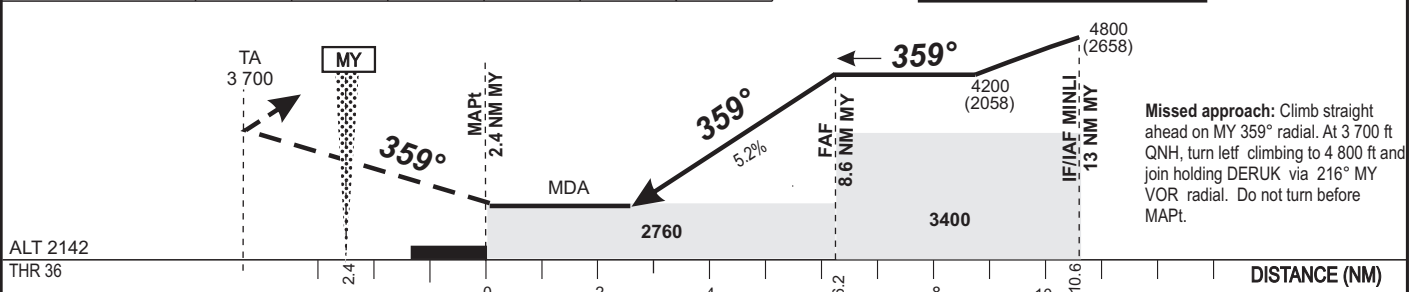


Distance to MY VOR/DME	5	6	7	8	FAF
Altitude (ft)	3020	3330	3650	3970	4200

TRANSITION ALTITUDE: 6000



Missed approach: Climb straight ahead on MY 359° radial. At 3 700 ft QNH, turn left climbing to 4 800 ft and join holding DERUK via 216° MY VOR radial. Do not turn before MAPt.

CAT	VOR Z				CIRCLING (2)			VIS	RVR for take-off	
	OCA (OCH)	MDA	MDH	RVR(1)	OCA (OCH)	MDA	MDH		CAT A - B - C : 400	CAT D : 400
A	2760 (577)	2760 (580)		1500	2897 (738)	2900 (740)		1500		
B	2760 (577)	2760 (580)		1500	2897 (738)	2900 (740)		1600		
C	2760 (577)	2760 (580)		2000	3282 (1123)	3290 (1130)		2400		
D	2760 (577)	2760 (580)		2000	3282 (1123)	3290 (1130)		3600		

Notes: (1) Without approach lights - (2) OCH and MDH AAL, daytime only

Timing FAF/THR 6.2 NM					
	MIN	SEC	KT	MIN	SEC
90	4	Min 08	140	2	Min 39
100	3	Min 43	150	2	Min 29
110	3	Min 23	160	2	Min 20
120	3	Min 06	170	2	Min 11
130	2	Min 52	180	2	Min 04

AMDT 12/18 : NORMALIZATION